

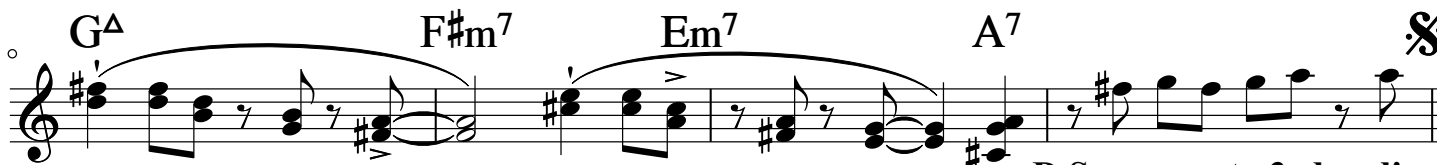
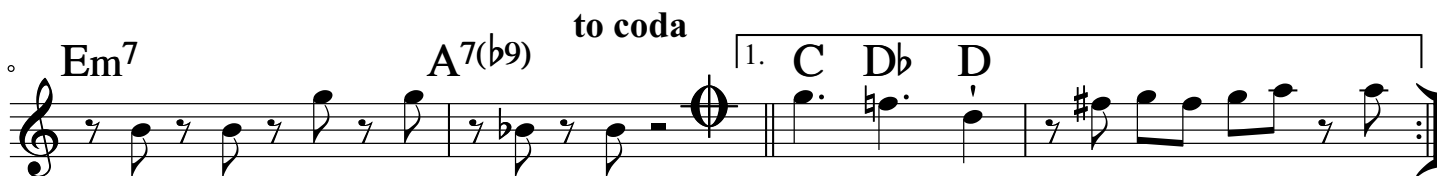
Mockingbird

Martin Lillich

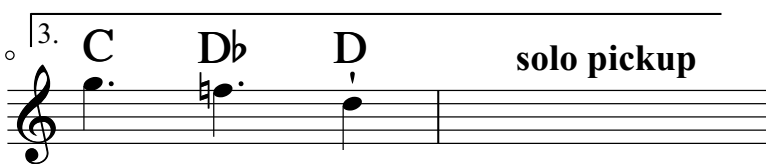
♩=90 latin groove

AABA ♯

1st A just melody,
2nd A add the chord changes.



D.S. no rep. to 3rd ending



blowing changes - AABBA !

A Em⁷ A^{7(b9)} D B^{7(b13)}

Em⁷ A^{7(b9)} 1. C⁷ B⁷

2.+3. C C# D D⁷
head out D.C. -----|

B G^Δ F#m⁷ Em⁷ A⁹

G^Δ F#m⁷ Em⁷ A⁷ D^Δ back to [A3]

coda C D^b D open for percussion on cue C D^b D N.C. unison

G G#^o D/A B^{7alt.} Em⁷ A^{7alt.} D D⁷

G Gm D B⁷⁺ E(sus4) A¹³ D fine